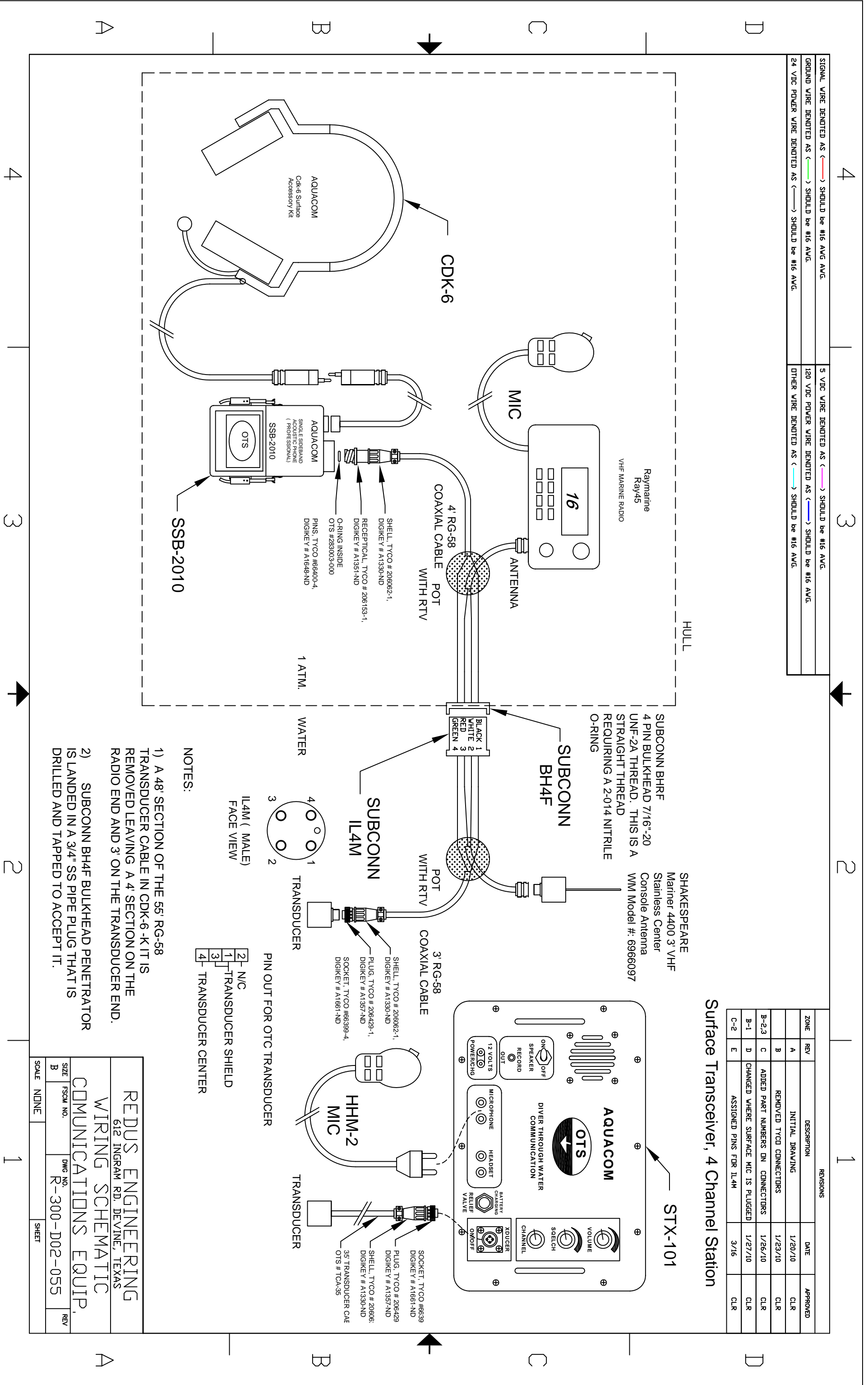


SIGNAL WIRE DENOTED AS (→) SHOULD be #16 AVG.	5 VDC WIRE DENOTED AS (→) SHOULD be #16 AVG.
GROUND WIRE DENOTED AS (→) SHOULD be #16 AVG.	120 VDC POWER WIRE DENOTED AS (→) SHOULD be #16 AVG.
24 VDC POWER WIRE DENOTED AS (→) SHOULD be #16 AVG.	OTHER WIRE DENOTED AS (→) SHOULD be #16 AVG.

REVISIONS				
ZONE	REV	DESCRIPTION	DATE	APPROVED
	A	INITIAL DRAWING	1/20/10	CLR
	B	REMOVED TYCO CONNECTORS	1/23/10	CLR
	B-2,3	ADDED PART NUMBERS ON CONNECTORS	1/26/10	CLR
	B-1	D CHANGED WHERE SURFACE MIC IS PLUGGED	1/27/10	CLR
	C-2	ASSIGNED PINS FOR IL4M	3/16	CLR
	E			

**Surface Transceiver, 4 Channel Station**



SHAKESPEARE  
Mariner 4400 3' VHF  
Stainless Center  
Console Antenna  
WM Model #: 6966097

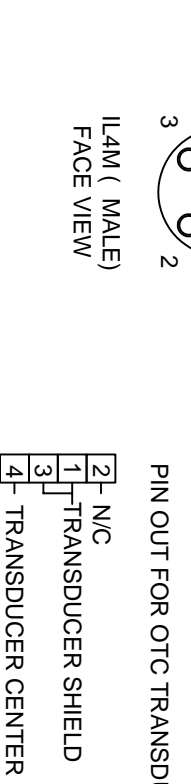
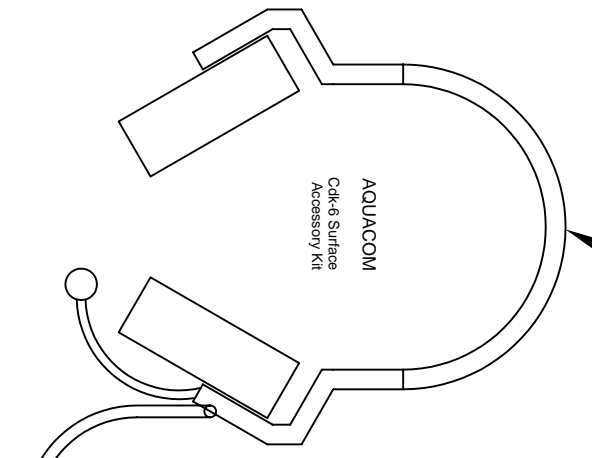
SUBCONN BH4F  
4 PIN BULKHEAD 7/16"-20  
UNF-2A THREAD. THIS IS A  
STRAIGHT THREAD  
REQUIRING A 2-014 NITRILE  
O-RING

3' RG-58  
COAXIAL CABLE  
WITH RTV

4' RG-58  
COAXIAL CABLE  
WITH RTV

SUBCONN  
IL4M  
WATER  
TRANSDUCER

SSB-2010  
AQUACOM  
SINGLE SIDE BAND  
ACROUSTIC PHONE  
(PROFESSIONAL)



NOTES:

- 1) A 48" SECTION OF THE 55' RG-58 TRANSDUCER CABLE IN CDK-6-K IT IS REMOVED LEAVING A 4' SECTION ON THE RADIO END AND 3' ON THE TRANSDUCER END.
- 2) SUBCONN BH4F BULKHEAD PENETRATOR IS LANDED IN A 3/4" SS PIPE PLUG THAT IS DRILLED AND TAPPED TO ACCEPT IT.

**REDUS ENGINEERING**  
612 INGRAM RD. DEVINE, TEXAS  
**WIRING SCHEMATIC**  
**COMMUNICATIONS EQUIP.**

SIZE	FSCM NO.	DWG NO.	REV
B		R-300-D02-055	

SCALE: NONE SHEET: 1